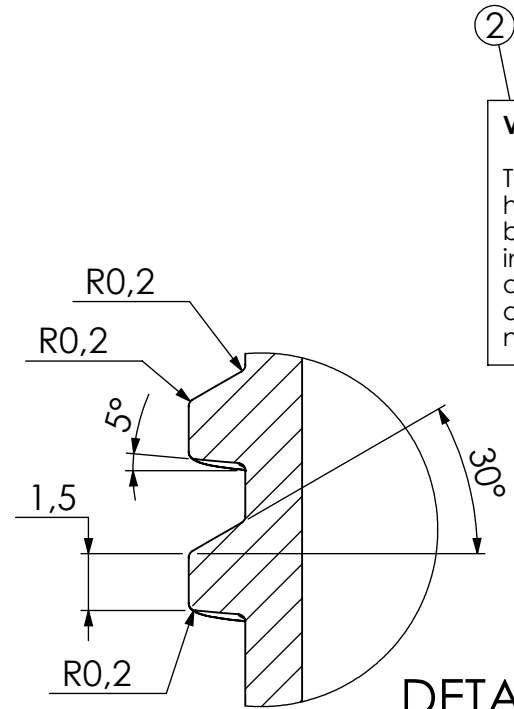
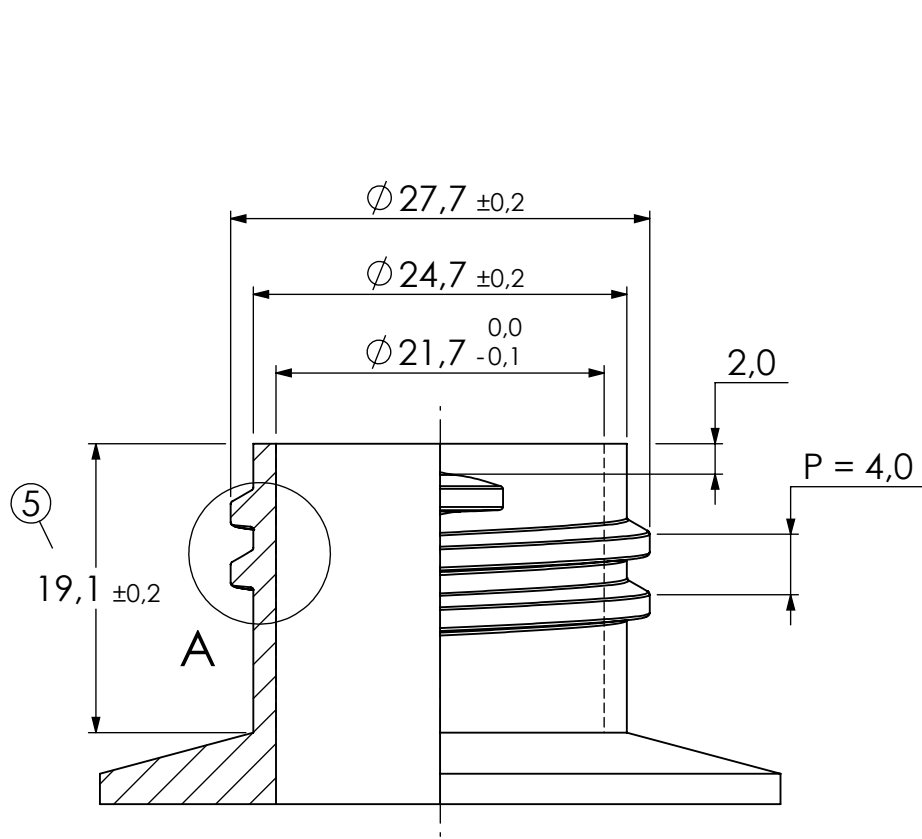


No.	Quantity	Changed / CS No	Date	Sign.	Appr.
1	1	General tolerance added	070315	JL	
2	1	New drawing, Note added	090414	JL	
3	2	Note added, changed name from 28IKPET to 28PETHALS	100128	JL	
4	1	Changed height from 18,9 to 19,1	110103	JL	



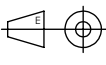
**Very Important**

The neck dimensions shown are those which have generally been found to be functional but each closure/finish system should be individually evaluated. Neck finishes having dimension outside these ranges can also be appropriate for use, therefore the bottle neck drawing is only a recommendation.

This recommendation is for following closure: 28BPETS

**DETAIL A**  
**SCALE 5 : 1**

① *General tolerance: SS-ISO 2768-1 m*

<b>Modulpac AB</b> Industrigatan 11 SE-340 14 Lagan Sweden  tel. +46-(0)372-25500 fax. +46-(0)372-25501	Scale	Drawn by	Appr.		Material	Date
	2:1	UM				011213
	Name					Format
<b>28 mm Neck PET</b>					A4	5
					Drawing No.	